



William Shakespeare's

A
MIDSUMMER
Night's dream

21ST & 22ND NOVEMBER 2018

@open
Norwich



THE OPEN YOUTH TRUST

(OPEN) has been working in partnership with Echo Youth Theatre since the beginning of 2018. OPEN is a charity based in the heart of Norwich which aims to raise the aspirations of young people by providing activities that help to build confidence and self-esteem, develop life skills and increase employment prospects. Established in 2005, OPEN provides

diverse and innovative ways to engage young people living in Norfolk through a variety of activities including dance, drama, music, climbing and employability workshops. The way in which we work with young people, including those from disadvantaged backgrounds, is to make a positive difference to their lives through our Drop-In hub and rural outreach. The charity is based in a Grade II

listed multi-purpose venue. Profits from the venue from conferences, live music, meeting room hire, catering, private dining, nightclub, cafe, dance studio, climbing wall and gym go directly to fund the youth charity, which is also supported by grants and donations as well as by organisations that want to enhance their corporate social responsibility strategies and reputations.

www.opennorwich.org.uk



The story so far...

Echo Youth Theatre was launched in December 2017 to offer young people accessible and flexible opportunities in theatre and performance. No termly fees, no fixed commitments – just a small annual fee and access to a workshop programme and auditions. We have been overwhelmed by the support for our venture from fellow theatre enthusiasts, industry professionals and our partners at Open Youth Trust.

In our first year we have produced a full-scale

musical with the East Anglian premiere of “A Little Princess” in April, organised 24 workshops, run by industry professionals and local volunteers, training over 120 young people in a range of skills, including acting, dance, puppetry and musical theatre. We are excited to be presenting our first play to round off an amazing year.

Thank you for supporting Echo Youth Theatre by coming to our show and hope you will enjoy our fun-filled take on this Shakespearean classic.

DIRECTORS

Dan Rayner – Artistic Director • **Dave Myers** – Technical Director
Jo Myers – Company Director

Our amazing management team, whose dedicated work makes EYT the success it is:

Cathy Wilson – Workshop Co-ordinator
Nina Green – Marketing • **Jenni Newman** – Graphic Design
Christopher Neal – Website • **Chris Brown** – Musical Theatre Coach

And our talented production team who have supported us since our launch and throughout the year on all our projects:

Matt Cross, Kymm Loveday, Colin Nicol, Joe Loveday

We would also like to give special thanks to our volunteer workshop leaders in 2018 who have given their time to support us through our workshop programme:

Alex Green, Beth Tuckwood, Charly Nicol, Holly Graham, Joyce Amtower, Katie Pantry, Lisa Rowe, Nic Myers, Red Loft Theatre Company, Shedload Theatre Company, Sound Ideas Theatre Company, Sylvia Newton and Tom Davies

WWW.ECHOYOUTHTHEATRE.CO.UK

Inspiring youth, nurturing talent, resounding fun

THE CAST

THE ATHENEANS

Theseus Anna Ryan
Egeus Ethan Kemp
Hippolyta Jenny Nicol
Philstrate Amelia Watson
Servant Esme Swire

THE LOVERS

Helena Nell Basley
Hermia Amy English
Demetrius Harry Wilson
Lysander Louis Miller

THE MECHANICALS

Peter Quince – director of the play Kylara Pope
Nick Bottom – plays Pyramus Natasha Nudd
Francis Flute – plays Thisbe Archie Robertson
Tom Snout – plays Moonshine Teejay Toomer
Snug – plays Lion Skye Meekings
Robin Starveling – plays Wall Ethan Kemp
Quince's Assistant Dakota Fox

THE FAIRIES

Oberon Toby Ellett
Titania Posy O'Rourke
Puck Korben White
Mustardseed Pippa Likims
Peaseblossom Priya Hunter
Cobweb Marianna Massa
Moth Mabel White & Charlotte Sprot

ADDITIONAL FAIRIES:

Esme Swire, Grace Bond, Honey Hartley, Isabelle Marrison,
Libby Lumb, Maisie Double-Cook, Nina Murdoch

THE STORY OF THE PLAY

A Midsummer Night's Dream is a comedy written by William Shakespeare in 1595 – that is 423 years ago! Yet, it is a tale of relationships that still strikes a chord with us today. It is a tale sprinkled with fairy fantasy, love, mischief and mirth.

It portrays the events surrounding the marriage of Theseus, the Duke of Athens, to Hippolyta, the former queen of the Amazons. A domineering lord, Egeus, demands the Duke orders his daughter Hermia, to marry the

man of his choice, Demetrius. Hermia rebels, wanting to marry a man she loves, Lysander, so the young lovers run away, pursued by Demetrius and Hermia's jealous friend, Helena, who wants Demetrius for herself.

Meanwhile, a group of six amateur actors (the Mechanicals) are struggling to put on a play for the Duke's wedding. Quince, the play's Director, is thwarted by artistic differences with his leading man, Bottom and an absence of talent within the band of actors.

The young lovers and the actors end up in the forest and catch the eye of a scheming Fairy King, Oberon, and his mischievous side-kick, Puck. Puck is tasked to play a trick on the Fairy Queen, Titania, but gets carried away with his mischief and includes the actors and the lovers in his tricks.

A merry mayhem of confusion, transformation and misplaced love-at-first-sight ensues, which requires Oberon to step in and sort out . . . does it all work out in the end? You will have to wait and see.

THESEUS



ANNA RYAN - THESEUS

Anna is 18 years old and attends Paston College. She is a performing arts and drama student who enjoys being able to tell stories and convey meaning through acting and drama. Anna has loved being involved with *A Midsummer Night's Dream* because she loves bringing new life into Shakespearean language in front of a modern audience.

JENNY NICOL - HIPPOLYTA

Jenny, who is 17, has been performing with Norfolk Youth Music Theatre since the age of 7. She has loved performing Shakespeare and making new friends. She is thrilled to be working with a new youth group, as well as concurrently rehearsing with her first adult company (Threshold Theatre Company) for *Elf the Musical*, to be performed in December.



HIPPOLYTA

ETHAN KEMP - EGEUS (ALSO STARVELING/WALL)

Ethan is 16 years old and attends City College Norwich, currently studying Level 3 Musical Theatre. He is a keen singer and actor specialising Musical Theatre and Rock/Pop vocal Examinations. This is his first Shakespeare production and he has enjoyed every minute of the hilarious script that *A Midsummer Night's Dream* has to offer.

AMELIA WATSON - PHILOSTRATE

Amelia is 15 and goes to Hellesdon High School. She loves drama, dance and music and is a keen singer. She is very excited to be performing *A Midsummer Night's Dream*. She has been in many other productions and is also currently rehearsing for *Elf the Musical* in the child ensemble.

THE ATHENIANS

EGEUS



ESME SWIRE - SERVANT (ALSO ADDITIONAL FAIRY)

Esme is 13 years old and attends City of Norwich School. She is an enthusiastic musician; playing clarinet in a wind band and singing with several choirs. Esme's favourite part of *A Midsummer Night's Dream* is wearing her colourful fairy bloomers on stage!



PHILOSTRATE



TOBY ELLETT - OBERON

Toby is 15 years old and attends Broadland High School. He is a passionate actor and specialises in movement and dance. He has always loved performing and reading Shakespeare as he is fascinated with Shakespeare's use of words and how they flow. He also loves the amazingly creative worlds that Shakespeare created through his plays.



POSY O'ROURKE - TITANIA

Posy is 16 years old and attends City of Norwich School Sixth Form. She has been acting since she was 8 and has been in many musicals and plays with various theatre companies, including EYT's first musical *A Little Princess*. In the future she aspires to work in theatre, continue writing plays and train in Shakespearean acting. She hopes you enjoy the show!



KORBEN WHITE - PUCK

Korben is 12 and attends Archbishop Sancroft High School. Previous roles include Benji in *Priscilla Queen of The Desert* (Sound Ideas) and he will be appearing as Michael in *Elf the Musical* at Norwich Playhouse in December with Threshold Theatre Company. Korben is thrilled to be playing the role of Puck as he's a very energetic, fun and interesting character.

THE FAIRIES



MABEL WHITE - MOTH

Mabel White (Moth) - Mabel is 11 years old and attends Aylsham High School. Mabel enjoys dancing and singing as well as acting. She is thoroughly enjoying her first production with Echo Youth Theatre. Her love of Shakespeare comes from the passion and enthusiasm of her Year 6 teacher Mrs Morgan at Aldborough Primary School.

CHARLOTTE SPROT - MOTH

Charlotte is 12 years old and attends Hellesdon High School. Charlotte is really active and enjoys participating in lots of different sports including gymnastics, football, netball and basketball. She loves drama and singing, she has performed in school but this is her first Shakespearean play and she is really enjoying the experience.

MARIANNA MASSA - COBWEB

Marianna is 11 and goes to Sprowston Community Academy. She enjoys gymnastics, cheerleading and craft. She has enjoyed being part of the show because it has boosted her confidence, she has made new friends and had a lot of fun.

PRIYA HUNTER - PEASEBLOSSOM

Priya is 13 and attends Hellesdon High School. She didn't think she would like Shakespeare, but she has enjoyed being a part of *A Midsummer Night's Dream* very much. She has loved being involved with Echo Youth Theatre and played a principal role in EYT's last production, *A Little Princess*, as Becky.

PIPPA LIKIMS - MUSTARDSEED

Pippa is 12 years old and has a passion for dance. She has been training in contemporary, street and performance styles for most of her life and is a member of Mini Pulse dance performance company. She has loved her time with EYT; performing in *A Little Princess* in Spring 2018. She is really enjoying preparing for *A Midsummer Night's Dream* - her first Shakespeare.

THE FAIRIES

If we shadows have offended,
Think but this, and all is mended,



That you have but slumbered here
While these visions did appear.



Gentles, do not reprehend:
If you pardon, we will mend.



And this weak and idle theme,
No more yielding but a dream,



And, as I am an honest Puck,
If we have unearned luck





Give me your hands, if we be friends,
And Robin shall restore amends.



Now to escape the serpent's tongue,
We will make amends ere long



Else the Puck a har call:
So, good night unto you all.

HELENA



NELL BASLEY - HELENA

Nell is 16 years old and attends Paston College. She loves playing flamboyant and expressive characters from the Artful Dodger to Mary Poppins. Nell loves playing Helena because she is so hysterical and relatable. Her favourite line from the show is: 'No, no I am as ugly as a bear!'

DEMETRIUS



HARRY WILSON - DEMETRIUS

Harry is 16 years old and attends Taverham High School. He is currently studying drama at GCSE this year and loves performing. He is delighted to be performing in *A Midsummer Night's Dream* with such a talented bunch of people. He says learning the Shakespeare dialect has been both challenging and rewarding but the part of Demetrius is great fun as he's a bit of a love rat and a rather cocky chap!

THE LOVERS

AMY ENGLISH - HERMIA

Amy is 18 years old, and goes to Paston College, where she is studying Drama and Performing Arts. Along with her passion for drama and acting, she is a big fan of Sci-fi, especially *Doctor Who*. She has enjoyed being part of *Midsummer* because it has expanded her skills of performing with the Shakespearean language. Her favourite line is: "How low am I, thou painted Maypole, speak!"

HERMIA



LOUIS MILLER - LYSANDER

Louis is 17 years old and in his first year at City College Norwich. He first appeared on stage at the age of 12 and this is Louis' second show with EYT having appeared in their debut show *A Little Princess*. Louis has loved rehearsing for *A Midsummer Night's Dream* and wants to thank the directing team for giving him such an amazing opportunity. Louis will also be appearing in *Elf the Musical* in December.

LYSANDER





ARCHIE ROBERTSON - FLUTE / THISBE

Archie is 17 years old and attends Aurora Eccles School in Quidenham. Archie loves all aspects of the performing arts, including backstage and front of house activities. Archie really enjoys the comedy element of *A Midsummer Night's Dream* and his favourite line is 'Nay faith let me play a woman, I have a beard coming'.

TEEJAY TOOMER - SNOUT / MOONSHINE

Teejay is 13 years old and attends Ormiston Victory Academy. He loves Performing Arts and loves performing *A Midsummer Night's Dream* because his character is funny. His favourite line from this play is "You can never bring in a wall, what say you Bottom".

SKYE MEEKINGS - SNUG / LION

Skye is 9 years old and attends Catton Grove Primary School. Skye has really enjoyed being part of the cast in her first Shakespeare play and hopes you enjoy her scary Lion! She is looking forward to being part of many more shows.

DAKOTA FOX - QUINCE'S ASSISTANT

Dakota is 13 and she loves performing arts she wants to be a professional singer when older. Dakota was part of EYT's last show *A Little Princess* and she is currently also rehearsing for *Sister Act* at school. Dakota is looking forward to the performance and hopes you are too.

ETHAN KEMP - STARVELING / WALL (ALSO EGEUS)

THE MECHANICALS



THE MECHANICALS

BOTTOM / PYRAMUS



NATASHA NUDD -
BOTTOM / PYRAMUS

Natasha is 18 years old and attends Paston College where she studies Drama, English Literature and Graphics. Natasha loves acting and is pleased to have performed as many characters with big personalities in the past, such as Shrek and Trunchbull. She has loved playing Bottom as he is a larger than life character with lots of comic potential.

KYLARA POPE - PETER QUINCE,
THE DIRECTOR

Kylara is 13 years old and attends Hellesdon High School. She enjoys all things musical theatre and sings a lot. She has enjoyed *A Midsummer Night's Dream*, as it has been a new and exciting experience to try a new and different style of acting and a very different type of character she is used to playing.

PETER QUINCE, THE DIRECTOR



ALL ABOUT *noda*

National Operatic and Dramatic Association Headquarters:

15 The Metro Centre, Peterborough, PE2 7UH | Tel: 01733 374790 • Email: info@noda.org.uk | www.noda.org.uk

The National Operatic and Dramatic Association (NODA), founded in 1899, is the leading representative body for amateur theatre in the UK. The Association has a membership of approximately 2000 amateur theatre groups and approximately 800 individual members staging musicals, operas, plays, concerts and pantomimes in a wide variety

of venues. Covering a broad spectrum of age ranges, NODA member societies support performers, whether dramatic, dance or musical, and those involved backstage, front of house or in society administration.

NODA aims to give a shared voice to amateur theatre and help societies and individuals achieve the highest standards of

best practice and performance. The Association also provides leadership and advice to enable amateur theatre to tackle the challenges and opportunities of the 21st century. To achieve these aims NODA is divided into eleven regions, supported by a network of regional representatives and officials.

Membership of NODA provides theatre groups and

individuals with a wide range of benefits including access to NODA's advice service at national and regional level, as well as representation to government, access to funding agencies, direct access to rights holders and the media as well access to regional and national conferences, workshops and seminars to help share information on best practice.

noda

Be inspired by amateur theatre

ADDITIONAL FAIRIES



NINA MURDOCH - DRAGONFLY

Nina is 11 years old and is in her final year at Trowse Primary School. She enjoys musical theatre and is also going to be performing as child ensemble in *Elf the Musical* to be performed in December. She loves the steampunk interpretation of this Shakespeare classic.

LIBBY LUMB - CHERRY BLOSSOM

Libby is 13 years old and goes to Aylsham High School. She loves drama, but this is the first time she has been involved in a Shakespeare play. She is learning to play the piano and really loves Christmas! The best things about *Midsummer* have been learning new acting techniques and the costumes.

ISABELLE MARRISON - POPPYSEED

Isabelle is 10 years old and attends St Peter's Primary Academy. Isabelle loves performing and is really looking forward to being in her first Shakespeare play. Isabelle has appeared in *Peter Pan a Musical Adventure* at the Maddermarket Theatre as well as Echo Youth Theatre's production of *A Little Princess*.

HONEY HARTLEY - SPIDER

Honey is 10 years old and loves singing and dancing and eating chocolate! Her favourite part of *A Midsummer Night's Dream* is "the log roll". She has really enjoyed being in the play and hopes everyone likes it. Honey has loved making new friends at Echo Youth Theatre.

MAISIE DOUBLE-COOK - WASP

Maisie is 9 years old and attends Kinsale Junior School. She has enjoyed performing since she was 4 years old and has been excited by the opportunities given to her by EYT. Maisie loves the stories of Shakespeare and has particularly enjoyed the movement, music and humour this show brings.

GRACE BOND - PEACOCK

Grace is 9 years old and attends Kinsale Junior School in Hellesdon. Her interests are horses, especially riding and is a keen actor. Grace has absolutely loved the whole *A Midsummer Night's Dream* experience. She has grown in confidence, become much more independent and has grasped a great understanding of Shakespeare.

ESME SWIRE - AUTUMN & ATHENIAN SERVANT

DIRECTORIAL TEAM



KERRY STANLEY - DIRECTOR

Kerry is a talented performer and director and is the Head of Performing Arts at Hellesdon High School. Before becoming a teacher, Kerry lived in Hampshire and London working for Hospital Radio (marketing), Festival Radio (Interview recording), touring a production of Noel Cowards *The Odd Couple* (Olive), and in educational outreach work at London's Southwark Theatre.

Kerry has written the drama course for the Oxford International Summer School Program with a focus on the British Theatre Tradition and Shakespeare. She has a personal interest in physical theatre, dramatic adaptations, and the retelling of classics with a contemporary theatre twist.

A Midsummer Night's Dream is the first production that she has directed in Norwich, outside of school, and we are delighted that she has brought her talents, energy and extreme enthusiasm for Shakespeare to Echo Youth Theatre.



CHRISTOPHER DAVIDSON - ASST. DIRECTOR

Chris trained professionally at Mountview Academy of Theatre Arts achieving a BA (Hons) Degree in performance (Musical

Theatre Option) in 2014.

Since then he has been involved in a varied selection of theatre performances and productions around the UK and abroad in such shows as *Tommy*, *The Who Musical* (Tommy); *The Producers* (Leo Bloom); *The City of Angels* (Sonny/Studio Cop/Chorus Master); *Enron* (Andy Fastow); *Half a Sixpence* (Ensemble/Banjo Player); *Poppies* (Leonard); *The Sound of Musicals* (Vocalist) & *Into the Woods* (Jack). Most recently, he has been seen as Don Lockwood in *Singin' in the Rain* at the Norwich Playhouse (Sound Ideas Aug 18)

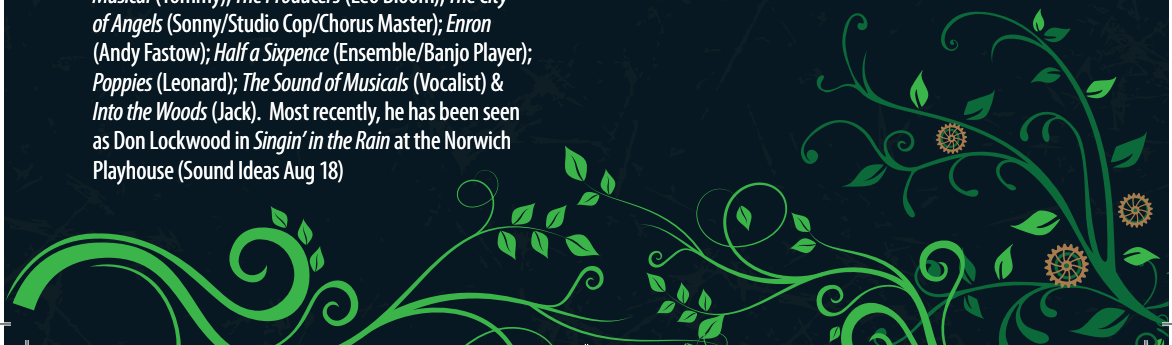
KATE PANTRY - ASST. DIRECTOR



Kate is a primary school teacher from Norwich. Before becoming a teacher, Kate studied Theatre at Brunel University, London.

As part of her degree, Kate co-wrote and originated the role of Bed Pan in *WHITE WALLS* - An Original Musical. She was also one of the original members of The

Brunettes, an all-female acapella singing group. Kate has also worked as a choreographer for amateur youth theatre, helping out with full scale productions and with concert numbers. Whilst at university, Kate was a committee member and choreographer for the Brunel Musical Theatre Society and Brunel Arts Centre



WE ARE GRATEFUL TO ALL THE BUSY PEOPLE WHO GIVE THEIR TIME
VOLUNTARILY TO SUPPORT OUR PRODUCTIONS AT ECHO YOUTH
THEATRE, WITHOUT WHOM, THERE WOULD NOT BE A SHOW

PRODUCTION TEAM



Jo Myers

Production Manager Jo Myers
Technical Manager Dave Myers
Stage Manager Kymm Loveday
Stage Crew Colin Nicol & Joe Loveday
Sound and Light Designer Matt Cross



Colin Nicol

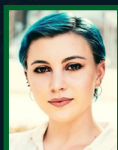


Dave Myers

Production Designer Jo Myers
Assistant Production Designer Georgia-Louise Oliver
Programme & Poster Design Jenni Newman
Photography Dan Smith
Publicity Nina Green



Joe Loveday



Georgia-Louise Oliver

Set Design Jo Myers & Georgia-Louise Oliver
Set Build Joe Loveday & Colin Nicol
Costume Design Jo Myers
Costume/Props Makers Jo Myers & Kymm Loveday
Hair & Make-Up Georgia-Louise Oliver & Nina Green



Nina Green



Matt Cross

Front of House and Head Chaperone Dan Rayner
Chaperones Licensed by NCC



Dan Smith

WE WOULD ALSO LIKE TO THANK THE PEOPLE
AND ORGANISATIONS WHO SUPPORT OUR
PRODUCTION TEAM:



Kymm Loveday

Sound Ideas Theatre Company for the donation of costumes
that we were able to adjust and re-purpose

Unit Mate Ltd, Dereham for their support generally
and being our "man with a van"

The supportive parents of our wonderful cast, who have ferried
the cast back and forth to rehearsals, helped them learn their lines
and lent a hand, when needed



Jenni Newman

WE'RE EXCITED TO ANNOUNCE OUR
NEXT PRODUCTION WILL BE...

 Echo Youth Theatre 

hairspray

• THE BROADWAY MUSICAL •

AUDITIONS
JANUARY 2019

And we're looking for
The Nicest Kids in Town!

Auditions

Auditions will take place at Open, 20 Bank Plain, Norwich, NR2 4SF

Thursday 3rd Jan – 6.30pm–8.30pm Information and sing through
Friday 4th Jan – 6.30pm – 8.30pm Movement workshop
Saturday 5th Jan – 10am – 4pm Prepared individual auditions.

(Audition slots opening at the start of December)

Show dates

18th – 20th April 2019

open
Norwich